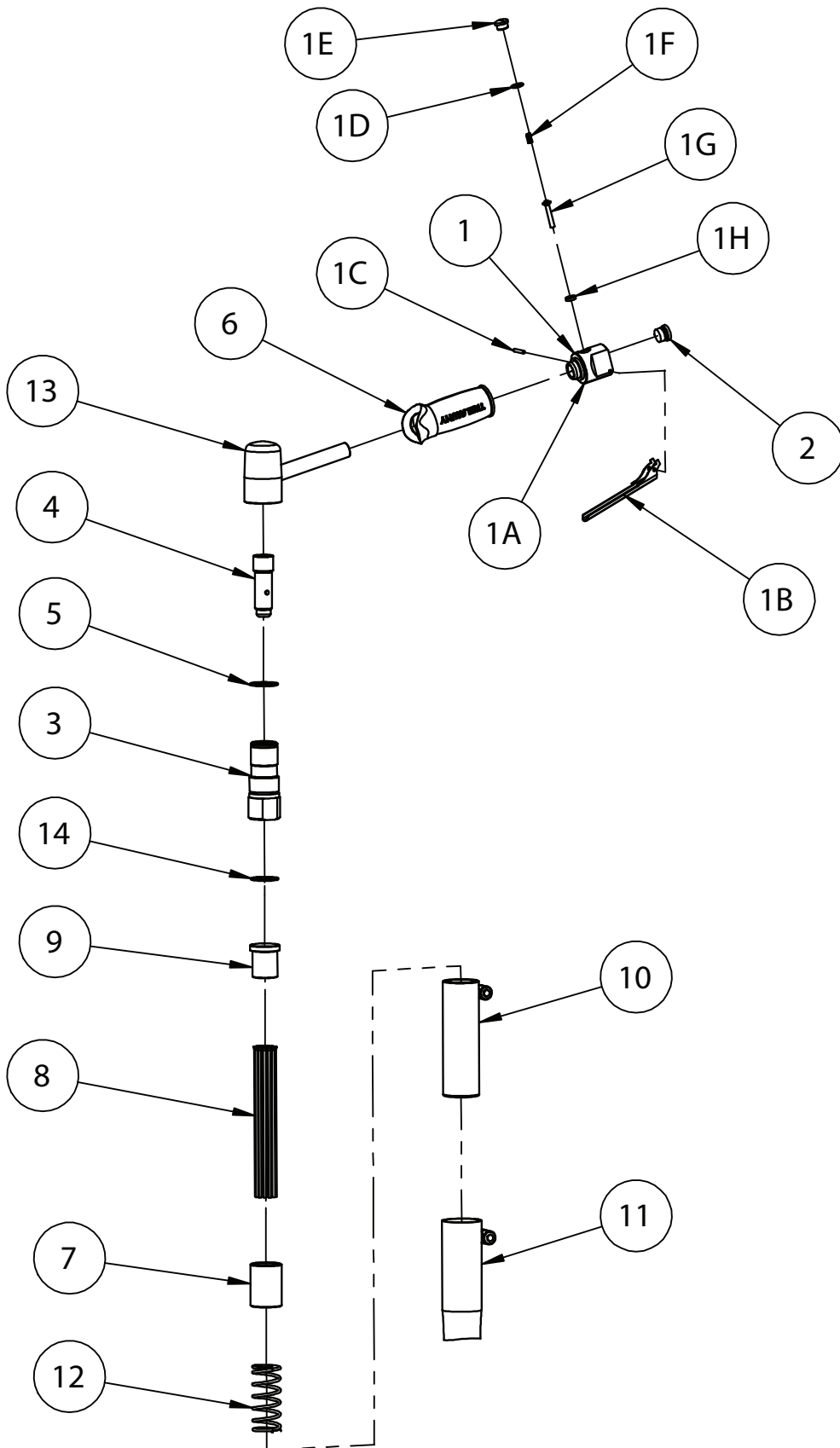


# EXPLODED VIEW - 2BPG NEEDLE SCALER



# PARTS LIST - 2BPG NEEDLE SCALER

ITEM NO.	PART NO.	DESCRIPTION	QUANTITY
1	423.3021	BPG/LR/PG Valve Body Assembly	1
1A	616.3021	Valve Body	1
1B	716.3000	Throttle Lever	1
1C	813.0108	Spring Pin 1/8" x 1" Long	1
1D	809.0139	Valve Cap O'Ring	1
1E	615.3021	Valve Cap	1
1F	712.3022	Valve Spring	1
1G	618.3022	Valve Stem	1
1H	809.0089	Valve Seat O'Ring	1
2	818.0250	Plug 1/4" BSP - Red	1
3	613.2101	Cylinder 2BPG	1
4	612.2001	Piston 2B & 2BPG	1
5	809.0249	O'Ring 28.3x1.78 1B/2BPG	1
6	717.3050	Grip - Trelawny Logo	1
7	601.2003	Needle Holder 3mm 2B	1
8	603.1107	Needle 3mm Flat	19
9	610.2001	Anvil 2B & 2BPG Scaler	1
10	416.2032	Tube Intermediate 2B	1
11	417.2032	Tube Straight Front 2B	1
12	712.2001	Spring Return 2B Scaler	1
13	425.2100	2BPG Cover Assembly - Red	1
14	809.0269	O'Ring 31.5x1.78 2BPG/3B	1
ITEMS NOT SHOWN			
N/A	446.1025	2BPG Needle Scaler Service Kit Inc 1B,1C,1D,1F,1G,1H,4,5,7,9,12,14 & 19 x Flat Tip Needles	1
N/A	446.7120	2B/2BPG Chisel Attachment Kit	1
N/A	819.2375	Connector 1/4 BSPT-3/8 Stem	1
N/A	458.1530	1/4" BSP Inline Oiler Assembly	1
N/A	453.1110	3mm Flat Needles x 100	1
N/A	453.2110	3mm Chisel Needles x 100	1
N/A	453.3110	3mm Pointed Needles x 100	1
N/A	453.1310	3mm Be/Cu Needles x 100	1