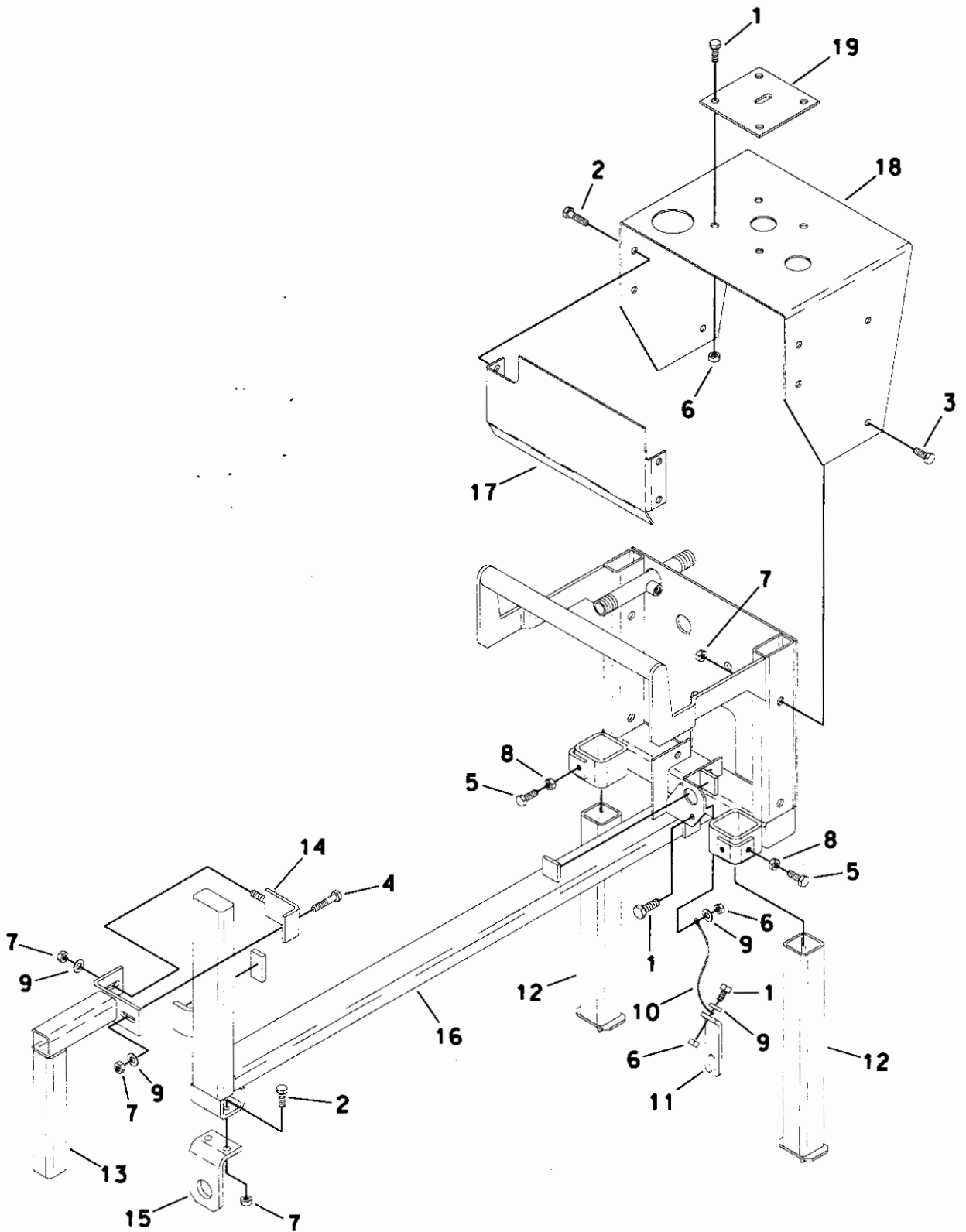


MAIN FRAME ASSEMBLY



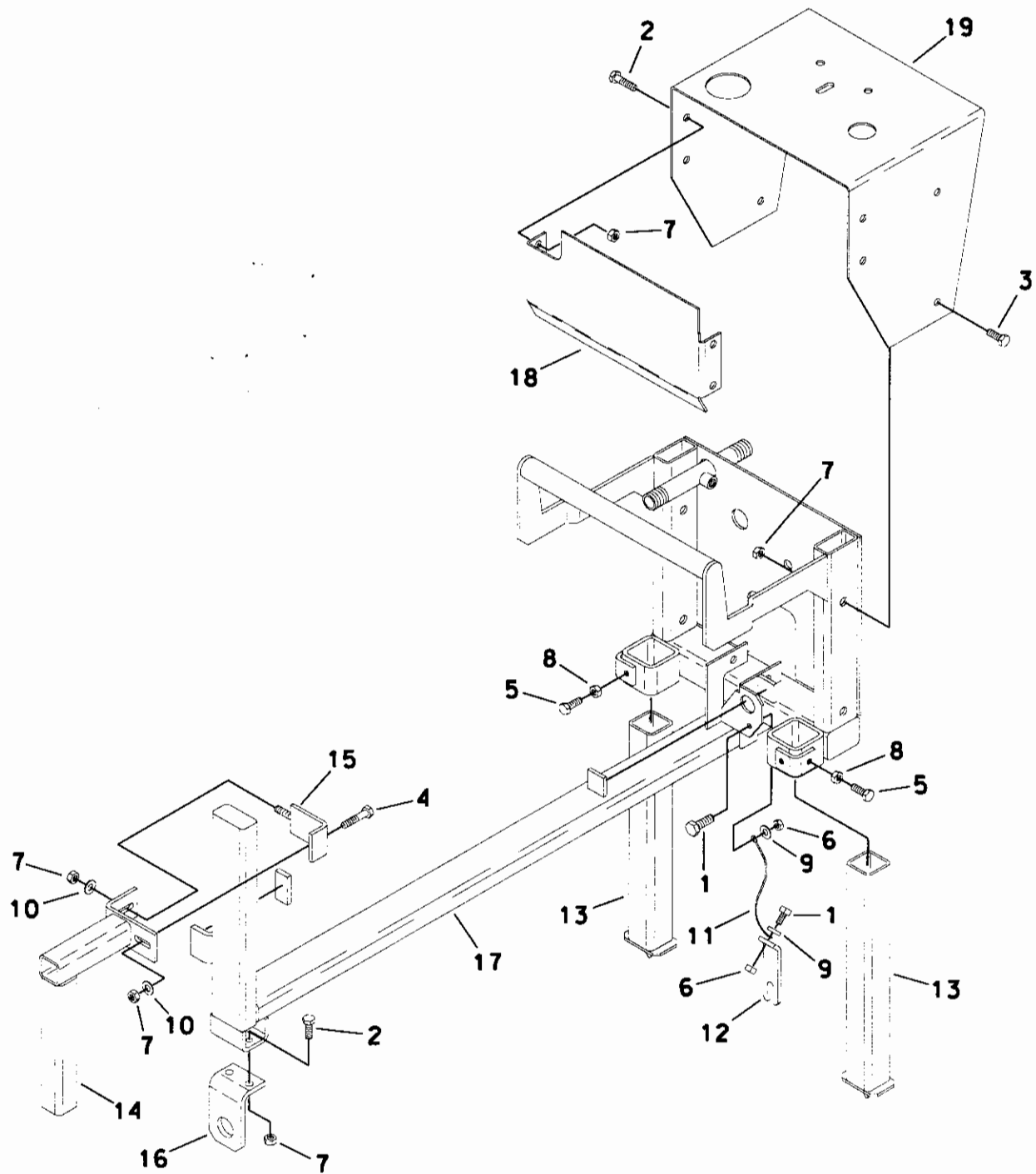
FNG8501-10

MAIN FRAME ASSEMBLY

ITEM	PART NO	QTY	DESCRIPTION
1.	2501BLT	6	BOLT (1/4" X 3/4")
2.	2519BLT	6	BOLT (5/16" X 3/4")
3.	2526BLT	4	BOLT (5/16" X 1-1/2")
4.	2530BLT	1	BOLT (5/16" X 2")
5.	2538BLT	4	BOLT (3/8" X 1")
6.	2716NUT	6	LOCKNUT (1/4")
7.	2719NUT	8	LOCKNUT (5/16")
8.	2725NUT	4	STD NUT (3/8")
9.	2801WAS	4	WASHER (1/4")
10.	3030PIN	1	LANYARD
11.	CRA0229	1	CARRIAGE LOCK
12.	MFA0603	2	REAR LEG
13.	MFA0636	1	FRONT STABILIZER BAR
14.	MFA0638	1	STABILIZER BAR CLAMP
15.	MFA0639	1	BIT GUIDE (SPECIFY FOR BIT SIZE: 1/2", 5/8", 3/4", OR 7/8")
16.	MNF0505	1	MAIN FRAME (8" DD)
	MNF0506	1	MAIN FRAME (12" DD)
17.	PAN0404	1	FRONT PANEL
18.	SHR0305	1	SHROUD
19.	SRU1346	1	VALVE ADAPTOR PLATE

FNG8501-10

MAIN FRAME ASSEMBLY

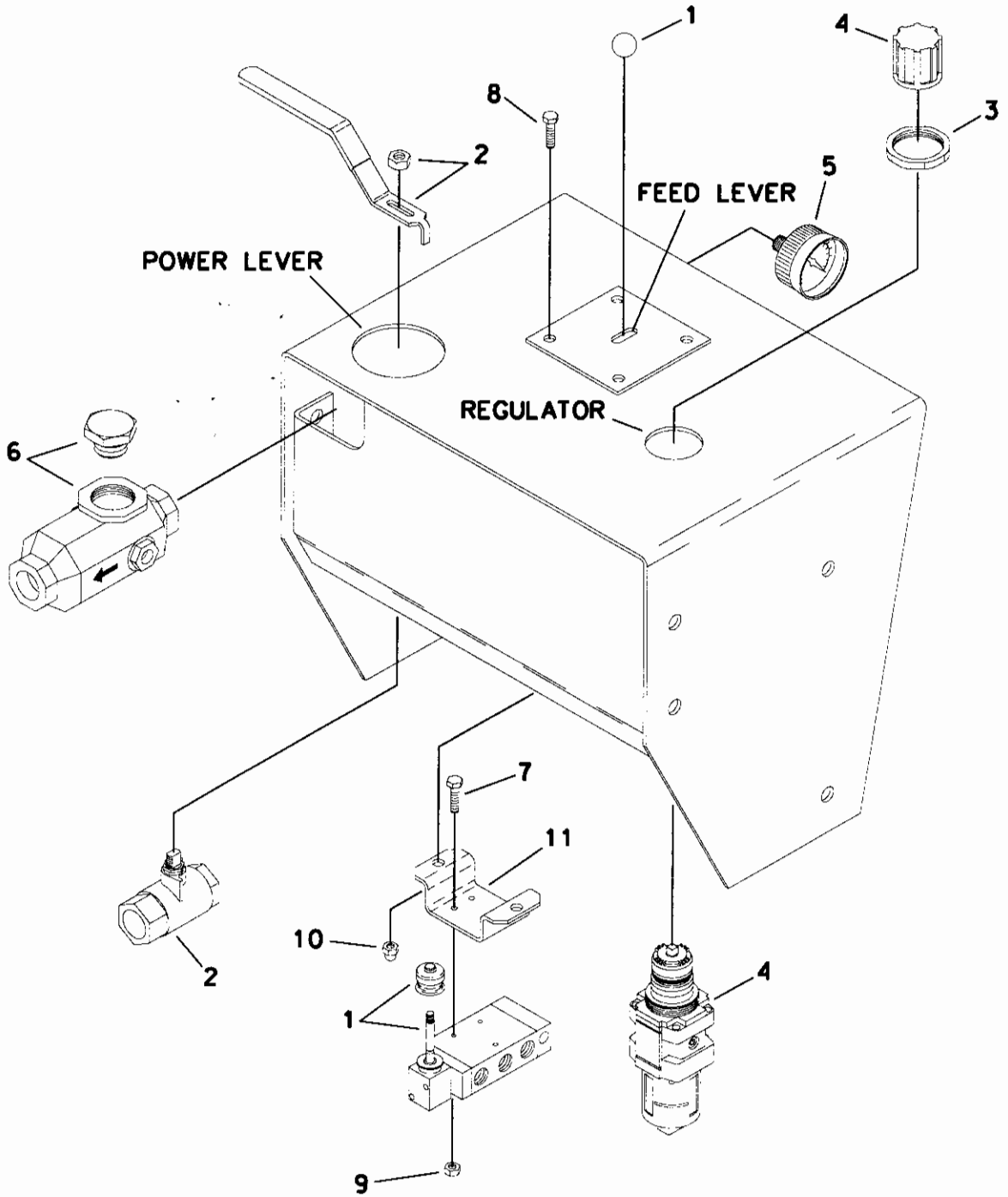


FNG8501-11

MAIN FRAME ASSEMBLY

ITEM	PART NO	QTY	DESCRIPTION
1.	2501BLT	2	BOLT (1/4" X 3/4")
2.	2519BLT	4	BOLT (5/16" X 3/4")
3.	2526BLT	4	BOLT (5/16" X 1-1/2")
4.	2528BLT	1	BOLT (5/16" X 1-3/4")
5.	2538BLT	4	BOLT (3/8" X 1")
6.	2716NUT	2	LOCKNUT (1/4")
7.	2719NUT	10	LOCKNUT (5/16")
8.	2727NUT	4	LOCKNUT (3/8")
9.	2801WAS	2	WASHER (1/4")
10.	2841WAS	2	WASHER (5/16")
11.	3030PIN	1	LANYARD
12.	CRA0218	1	CARRIAGE LOCK
13.	MFA0603	2	REAR LEG
14.	MFA0636	1	FRONT STABILIZER BAR
15.	MFA0638	1	STABILIZER BAR CLAMP
16.	MFA0639	1	BIT GUIDE (SPECIFY FOR BIT SIZE: 1/2", 5/8", 3/4", OR 7/8")
17.	MNF0510	1	MAIN FRAME
18.	PAN0404	1	FRONT PANEL
19.	117-316	1	SHROUD

CONTROL PANEL

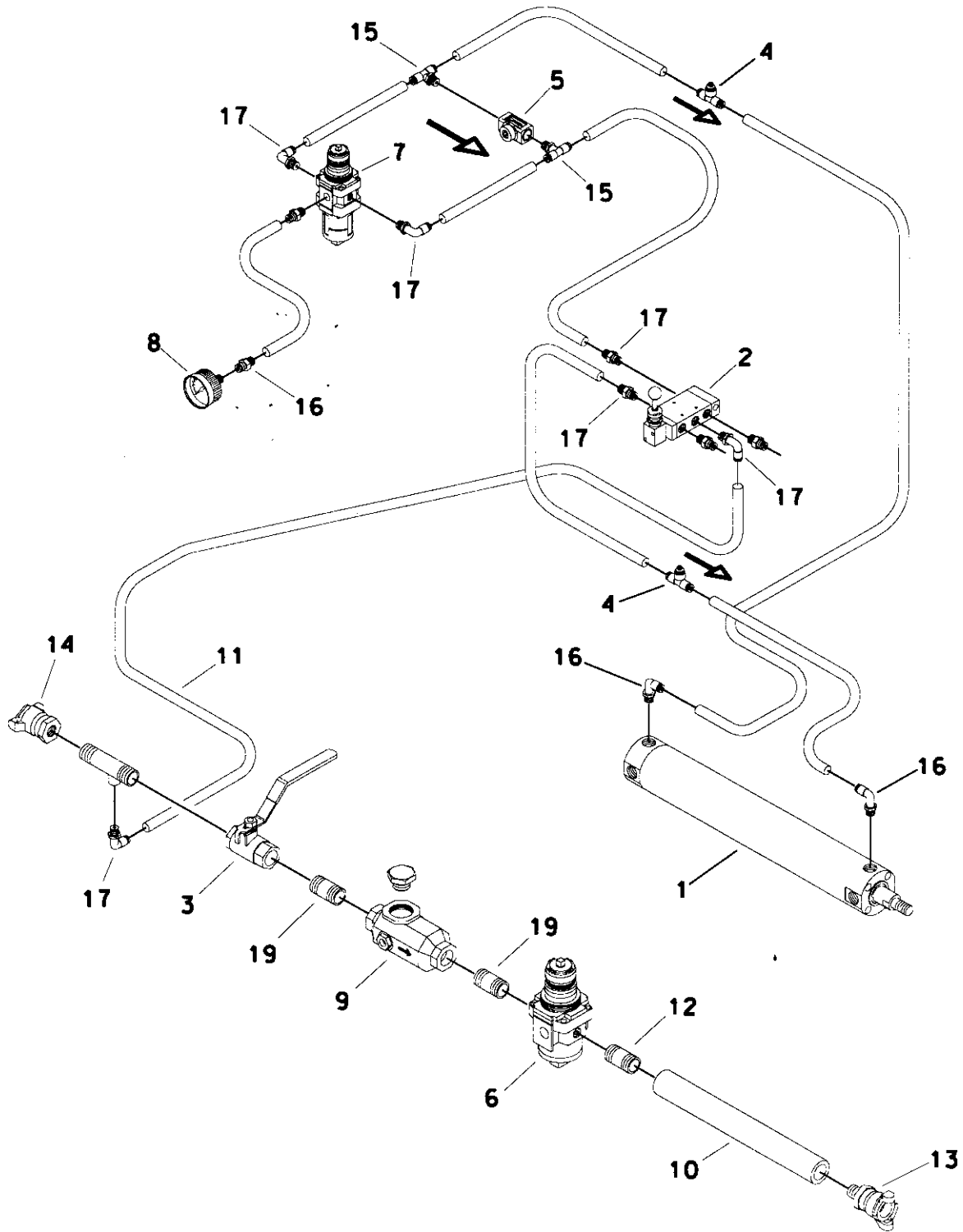


FNG8501-20

CONTROL PANEL

ITEM	PART NO	QTY	DESCRIPTION
1.	060102VAL	1	FEED CONTROL VALVE
2.	0613VAL	1	POWER CONTROL VALVE
3.	0806REG	1	REGULATOR LOCK RING
4.	0810REG	1	REGULATOR (INCL. REF NO 3)
5.	09022GAU	1	AIR GAUGE
6.	1602OIL	1	OILER
7.	2478BLT	3	BOLT (#8-32 X 1-1/2")
8.	2501BLT	4	BOLT (1/4" X 3/4")
9.	2712NUT	3	LOCKNUT (#8-32)
10.	2716NUT	4	LOCKNUT (1/4")
11.	SRU13460	1	VALVE SPACER

AIR LINE SCHEMATIC

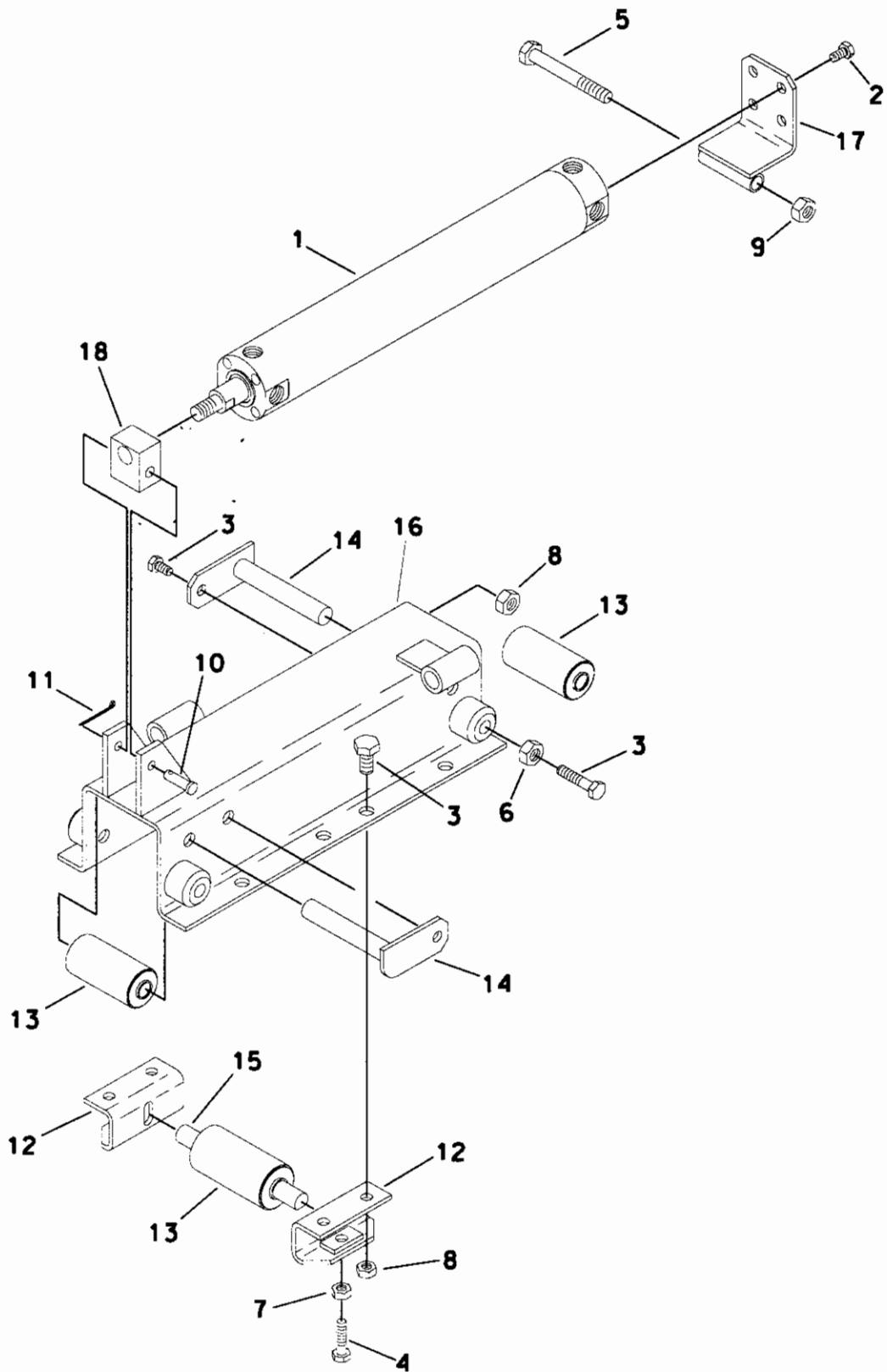


FNG8501-30

AIR LINE SCHEMATIC

ITEM	PART NO	QTY	DESCRIPTION
1.	05090CYL	1	AIR CYLINDER (8" DD)
	05100CYL	1	AIR CYLINDER (12" DD)
2.	060102VAL	1	FEED CONTROL VALVE
3.	0613VAL	1	POWER CONTROL VALVE
4.	06114VAL	2	FLOW CONTROL VALVE
5.	0614VAL	1	DIRECTIONAL VALVE
6.	0808REG	1	REGULATOR
7.	0810REG	1	REGULATOR
8.	09022GAU	1	AIR GAUGE
9.	1602OIL	1	OILER
10.	1902HOS	1	HOSE, 200 PSI W.P. TEST (1/2")
11.	1903HOS	4	AIR HOSE (1/4")(VARIOUS LENGHTS)
12.	2002FIT	1	SWIVEL FITTING (1/2")
13.	2002OFIT	1	HOSE FITTING COUPLING
14.	2009FIT	1	HOSE FITTING COUPLING
15.	2041FIT	2	AIR FITTING
16.	2050FIT	3	AIR FITTING
17.	2051FIT	6	MALE ELBOW AIR FITTING (1/4")
18.	2067FIT	1	AIR FITTING
19.	21110PFT	1	NIPPLE (1/2" X 1-1/2")MANIFOLD

CARRIAGE ASSEMBLY

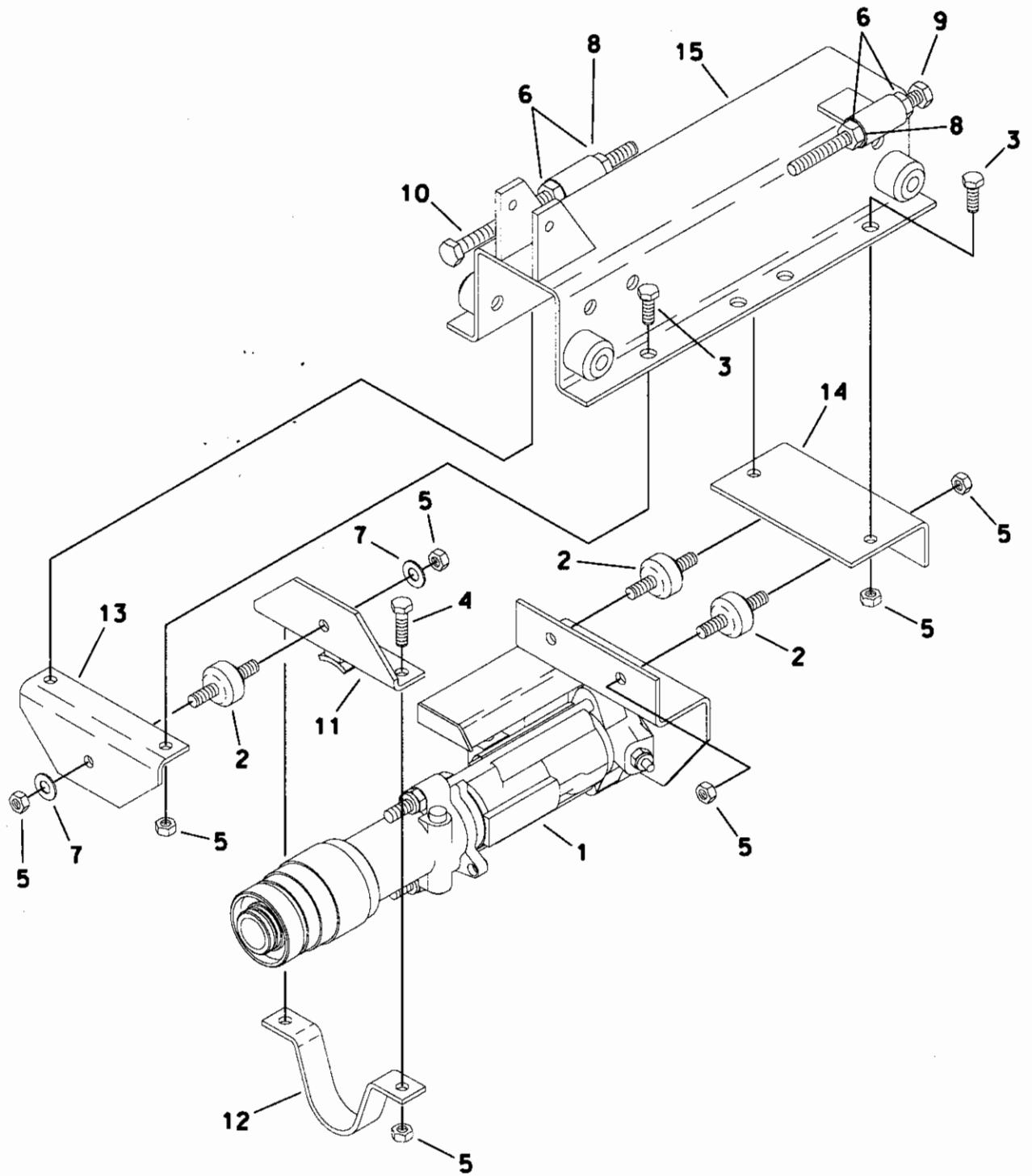


FNG8501-40

CARRIAGE ASSEMBLY

ITEM	PART NO	QTY	DESCRIPTION
1.	05090CYL	1	AIR CYLINDER (8")
	05100CYL	1	AIR CYLINDER (12")
2.	25160BLT	4	FINE BOLT (1/4" X 3/4")
3.	2519BLT	14	BOLT (5/16" X 3/4")
4.	25240BLT	2	BOLT (5/16" X 1-1/4")
5.	2550BLT	1	BOLT (3/8" X 3-1/2")
6.	2717NUT	4	NUT (5/16")
7.	27180NUT	2	FINE THREAD NUT (5/16")
8.	2719NUT	8	LOCKNUT (5/16")
9.	2727NUT	1	LOCKNUT (3/8")
10.	3004PIN	1	PIN
11.	3022PIN	1	COTTER PIN
12.	CRA0225	2	ADJUSTABLE LOWER BEARING BRKT
13.	CRA0232	3	ROLLER BEARING DRUM
14.	CRA02340	2	AXLE
15.	CRA02341	1	ROLLER BEARING AXLE
16.	CRG0106	1	CARRIAGE
17.	MFA06371	1	REAR CYLINDER BRACKET
18.	MFA0640	1	CLEVIS

CARRIAGE / AIR DRILL

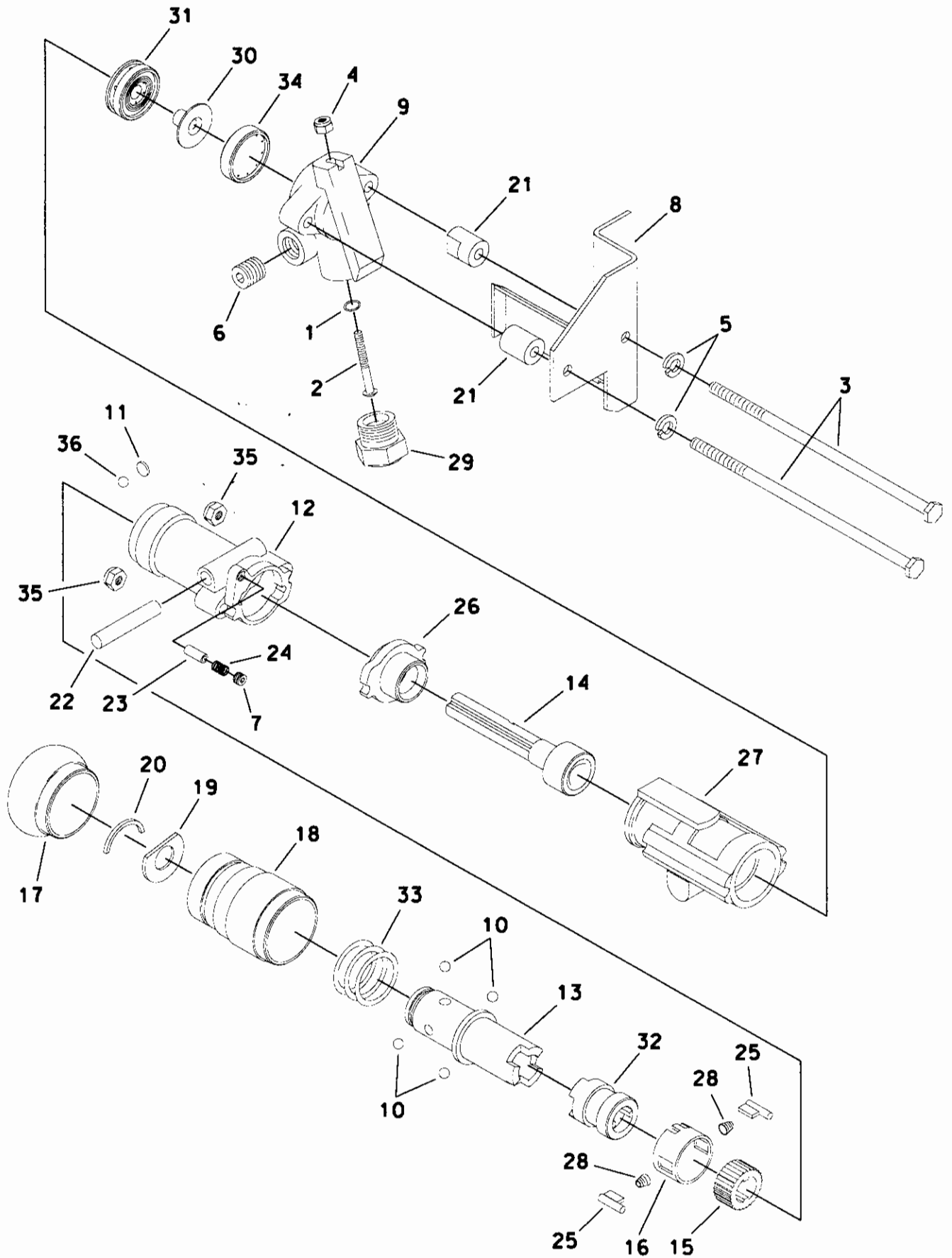


FNG8501-50

CARRIAGE / AIR DRILL

ITEM	PART NO	QTY	DESCRIPTION
1.	0104DRL	1	AIR DRILL
2.	1821GRO	3	RUBBER ISOLATOR
3.	2519BLT	8	BOLT (5/16" X 3/4")
4.	2520BLT	2	BOLT (5/16" X 1")
5.	2719NUT	12	LOCKNUT (5/16")
6.	2725NUT	4	NUT (3/8")
7.	2801WAS	2	WASHER (5/16")
8.	2821WAS	2	LOCK WASHER (3/8")
9.	CRA0205	1	REAR STOP ROD
10.	CRA0206	1	FRONT STOP ROD
11.	CRA0220	1	UPPER DRILL SADDLE BRACKET
12.	CRA0221	1	LOWER DRILL SADDLE BRACKET
13.	CRA0222	1	FRONT ISOLATOR BRACKET
14.	CRA0223	1	REAR ISOLATOR BRACKET
15.	CRG0106	1	CARRIAGE

CP9A HANDRILL



CP9A-10

CP9A HANDRILL

ITEM	PART NO	QTY	DESCRIPTION
1.	18289GRO	1	O-RING (1/4" X 1/16" CROSS-SECT)
2.	2508BLT	1	BOLT (1/4" X 2")
3.	2535BLT	2	BOLT - THRU (5/16" X 8", GD 8)
4.	2716NUT	1	LOCKNUT (1/4")
5.	2810WAS	2	LOCK WASHER (5/16")
6.	C077941	1	PLUG - PIPE (3/8")
7.	C102507	1	PLUG - PIPE (1/16 NPTF)
8.	CRA0224	1	REAR DRILL BRACKET
9.	F034495	1	HANDLE
10.	F035621	4	BALL - STEEL (5/16" DIA.)
11.	F061888	1	PLUG - BALL RETAINER
12.	F816120	1	FRONTHEAD
13.	F816121	1	CHUCK - SPLINE (CP9F)
14.	F816122	1	PISTON
15.	F816123	1	RING - RATCHET
16.	F816124	1	SLEEVE - SHIFTER
17.	F815343	1	EXCLUDER - DUST
18.	F815566	1	SLEEVE - RETAINER
19.	F826683	1	PLATE - RETAINER
20.	F826893	1	RING - RETAINER (INCL REF NO. 10)
21.	MFA0645	2	BOLT - THRU SPACER
22.	R051351	1	PLUNGER - SHIFTER
23.	R051352	1	PLUNGER - SHIFTER DETENT
24.	R051353	1	SPRING - PLUNGER
25.	R051355	2	PAWL
26.	R051356	1	BUSHING - CYLINDER
27.	R085886	1	CYLINDER
28.	R085890	2	SPRING - PAWL
29.	R085893	1	BUSHING - AIR INLET (3/8")
30.	R085897	1	VALVE
31.	R085898	1	SEAT - FRONT VALVE
32.	R085900	1	SLEEVE - CHUCK
33.	R086605	1	SPRING - SLEEVE RETAINER
34.	R095896	1	SEAT - REAR VALVE
35.	S013073	2	NUT - THRU BOLT
36.	S013112	17	BALL - CHUCK RETAINER