



E-Z DRILL

THE YELLOW DRILL WILL

FULL LINE CATALOG



SINGLE-GANG



TWO-GANG



20 UTL



MULTI-GANG



DESIGN/BUILD

MORE HOLES. SPOT ON.

THE YELLOW DRILL WILL

power through any concrete drilling or doweling project with exceptional efficiency, crosshair precision and durability like you've never seen. From airport runway construction and repair to lane additions, full-depth repair to industrial and utility projects, you'll find more profitability with every hole. And, the high quality, dependable drills ensure safe, productive operations to meet any project deadline.



GET THE DRILL THAT GETS RIGHT TO THE POINT. E-Z DRILL.

SLAB-RIDER (SRA)

AIRPORTS, LANE ADDITIONS, FULL-DEPTH REPAIR

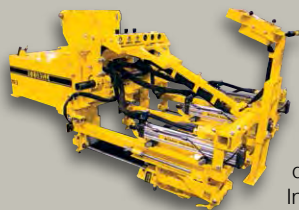


You can put a slab-rider, or on-slab drill, on top of the concrete slab and drill into the side of the slab without disturbing the sub-grade. All slab-rider drills can also drill vertical holes with just a few minor adjustments.

These versatile drills are also great for stitching and skew drilling.

EQUIPMENT-MOUNTED (EQ MT)

FULL DEPTH REPAIR



Equipment-mounted drills attach to most backhoes or excavators for exceptional mobility from patch to patch. They have a side-shift feature that allows you to drill a second set of holes without repositioning the carrier, and they rotate 360 degrees for drilling on the opposite side of the patch. In addition, each unit features a safety swivel lock that secures the drill during transport, and a "floating" bucket curl pin for faster positioning.

ON-GRADE

AIRPORTS, LANE ADDITIONS, FULL-DEPTH REPAIR, CURB & GUTTER



On-Grade drills operate from the subgrade, which keeps machines and operators out of traffic lanes. This configuration comes in one- and two-gang models and in either stationary or wheeled options. All on-grade drills have a vertical conversion kit available to be able to drill vertical holes.

DESIGN / BUILD

CONTRACTOR-SPECIFIC



E-Z Drill can custom design a drill with capabilities that match your specific needs. Tell us what you need to do, and we'll create a drill for you.

» CONFIGURATIONS



VERTICAL DRILLING

All slab-riders can drill horizontal and vertical with a few adjustments. All on-grade units have vertical conversion kits available.



SKREW DRILLING

All 210B SRA's come standard with a "skew" adjustment. "Skew" kits are available for other SRA units.



STITCHING

Position the drill to exact angles for quick, highly precise holes.

» APPLICATIONS



	AIRPORTS	LANE ADDITIONS	FULL DEPTH REPAIR	INDUSTRIAL & UTILITY	VERTICAL CAPABILITIES
--	----------	----------------	-------------------	----------------------	-----------------------

65B ON-GRADE				X	X*
85B ON-GRADE				X	X*
110B ON-GRADE		X	X		X*
210B ON-GRADE	X	X	X		X*
240B ON-GRADE	X	X	X		X*
210B SRA	X	X	X		X
240B SRA	X	X	X		X
20 UTL				X	X
210B-2 ON-GRADE	X	X			X*
210B-2 SRA	X	X	X		X
210-3 SRA	X	X	X		X
210-4 SRA	X	X	X		X
210-5 SRA	X	X	X		X
210-3 EQ MT			X		
210-4 EQ MT			X		
210-5 EQ MT			X		

*Requires vertical conversion kit.

» SINGLE-GANG

Choose a **SINGLE GANG** On-Grade or SRA drill for projects with several hundred to a few thousand holes. Models include the **65B On-Grade**, **85B On-Grade**, **110B On-Grade**, **210B On-Grade**, **240B On-Grade**, **210B SRA** and **240B SRA**.

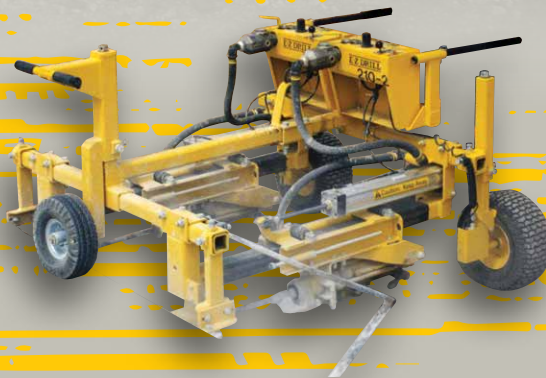
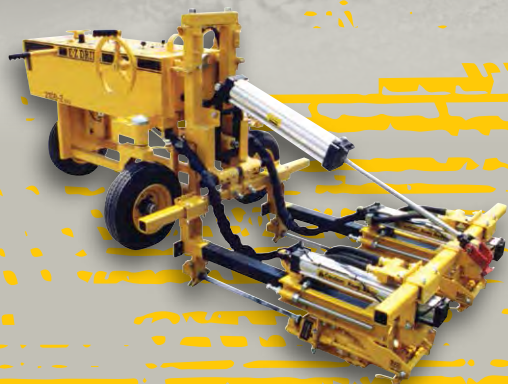


	MINIMUM PATCH SIZE <i>in. (cm)</i>	DRILL DEPTH <i>in. (cm)</i>	DRILL BIT DIAMETER <i>in. (mm)</i>	DRILL DISTANCE FROM CORNER <i>in. (cm)</i>	AIR CONSUMPTION <i>cfm (m³/min)</i>	HOSE SIZE (ID) <i>in. (mm)</i>	DRILL MOTOR <i>(pneumatic)</i>	CHUCK SIZE <i>in. (mm)</i>	WEIGHT <i>lbs. (kg)</i>
--	---------------------------------------	--------------------------------	---------------------------------------	---	---	-----------------------------------	-----------------------------------	-------------------------------	----------------------------

65B	24 (60.9)	8 (20.3)	1/2 - 7/8 (12.7 - 22.2)	6 (15.2)	20 (0.56)	3/4 (19.1)	CP 9C	3/4 x 3/4 (19.1 x 95.3)	65 (29.5)	
85B	30 (76.2)	9 (22.9)	5/8 - 2 (15.9 - 50.8)	6 (15.2)	32 (0.90)	3/4 (19.1)	CP 14	7/8 x 3/4 (22.2 x 82.6)	85 (38.6)	
110B	36 (91.4)	12 (30.5)	5/8 - 2 (15.9 - 50.8)	6 (15.2)	50 (1.40)	3/4 (19.1)	CP 22	7/8 x 3/4 (22.2 x 82.6)	170 (77.2)	
210B	48 (121.9)	18 (45.7)	5/8 - 2 1/2 (15.9 - 63.5)	6 (15.2)	100 (2.80)	3/4 (19.1)	CP 32A	7/8 x 3/4* (22.2 x 82.6)	285 (129.4)	
210B SRA	48 (121.9)	18 (45.7)	5/8 - 2 1/2 (15.9 - 63.5)	6 (15.2)	100 (2.80)	3/4 (19.1)	CP 32A	7/8 x 3/4* (22.2 x 82.6)	385 (174.8)	
240B	48 (121.9)	18 (45.7)	5/8 - 2 1/2 (15.9 - 63.5)	6 (15.2)	100 (2.80)	3/4 (19.1)	CORE	CP 32A	7/8 x 3/4* (22.2 x 82.6)	385 (174.8)
							ROCK	CS Unitec	1 1/4 x 7 (31.8 X 177.8)	
240B SRA	48 (121.9)	18 (45.7)	5/8 - 2 1/2 (15.9 - 63.5)	6 (15.2)	100 (2.80)	3/4 (19.1)	CORE	CP 32A	7/8 x 3/4* (22.2 x 82.6)	385 (174.8)
							ROCK	CS Unitec	1 1/4 x 7 (31.8 X 177.8)	

*7/8 x 4 1/4" available upon request.

TWO-GANG models provide maximum efficiency for medium to large drilling projects. These reliable, productive drills are available in the **210B-2 On-Grade** and **210B-2 SRA** models.



	MINIMUM PATCH SIZE <i>in. (cm)</i>	DRILL DEPTH <i>in. (cm)</i>	DRILL BIT DIAMETER <i>in. (mm)</i>	DRILL DISTANCE FROM CORNER <i>in. (cm)</i>	AIR CONSUMPTION <i>cfm (m³/min)</i>	HOSE SIZE (ID) <i>in. (mm)</i>	DRILL MOTOR <i>(pneumatic)</i>	CHUCK SIZE* <i>in. (mm)</i>	WEIGHT <i>lbs. (kg)</i>
--	--	---	--	--	--	--	--	---	-----------------------------------

210B-2

	48 (121.9)	18 (45.7)	5/8 - 2 1/2 (15.9 - 63.5)	6 (15.2)	200 (5.6)	1 1/4 (31.8)	CP 32A	7/8 x 3 1/4 (22.2 x 82.6)	710 (322.3)
--	------------	-----------	------------------------------	----------	-----------	-----------------	--------	------------------------------	----------------

210B-2 SRA

	48 (121.9)	18 (45.7)	5/8 - 2 1/2 (15.9 - 63.5)	6 (15.2)	200 (5.6)	1 1/4 (31.8)	CP 32A	7/8 x 3 1/4 (22.2 x 82.6)	1,150 (522.1)
--	------------	-----------	------------------------------	----------	-----------	-----------------	--------	------------------------------	------------------

*7/8 x 4 1/4" available upon request.

» MODEL 20 UTL

The **MODEL 20 UTL** is ideal for a range of vertical drilling applications, including gas leak pinpointing. With the **Model 20 UTL**, utility companies save valuable time and money because they no longer need to tear out stretches of roadway to find leaks. The standard drilling depth is 18 inches, but we can customize your drill to go several feet deep. With its compact, ergonomic design, it can be loaded, unloaded and easily operated by one person.



DRILL DEPTH <i>in. (cm)</i>	DRILL BIT DIAMETER <i>in. (mm)</i>	AIR CONSUMPTION <i>cfm (m³/min)</i>	HOSE SIZE (ID) <i>in. (mm)</i>	DRILL MOTOR <i>(pneumatic)</i>	CHUCK SIZE* <i>in. (mm)</i>	WEIGHT <i>lbs. (kg)</i>
--------------------------------	---------------------------------------	---	-----------------------------------	-----------------------------------	--------------------------------	----------------------------

20 UTL
STANDARD 18" DRILL DEPTH

18 (45.7)	5/8 - 2 1/2 (15.9 - 63.5)	100 (2.8)	3/4 (19.1)	CP 32A	7/8 x 3 1/4 (22.2 x 82.6)	207 (94)
--------------	------------------------------	-----------	------------	--------	------------------------------	----------

20 UTL
24" DRILL DEPTH

24 (61)	5/8 - 2 1/2 (15.9 - 63.5)	100 (2.8)	3/4 (19.1)	CP 32A	7/8 x 3 1/4 (22.2 x 82.6)	247 (112)
------------	------------------------------	-----------	------------	--------	------------------------------	-----------

20 UTL
42" DRILL DEPTH

42 (106.7)	5/8 - 2 1/2 (15.9 - 63.5)	100 (2.8)	3/4 (19.1)	CP 32A	7/8 x 3 1/4 (22.2 x 82.6)	380 (172)
---------------	------------------------------	-----------	------------	--------	------------------------------	-----------

*7/8 x 4 1/4" available upon request.

SINGLE-GANG, TWO-GANG, & MODEL 20 UTL FEATURES



AUTO ALIGNMENT

Reposition quickly after each hole set. Available on SRA models.



HOLE SPACING GUIDE

Get highly accurate drill repositioning with the optional, high-visibility pointer.



PNEUMATIC WHEELS

Move the drill effortlessly with wheels that ride smoothly over the concrete.



DUAL-PURPOSE GUIDE WHEELS

Move from hole to hole easily with the guide wheels on the **110B**, **210B** and **240B** models.



LIFTING HANDLE / LIFTING BALE

Machines with lifting handles allow the operator to operate, reposition and transport the drill safely with ergonomically correct leverage. All lifting bales are positioned for proper balance when loading and unloading.



MULTI-GANG units increase efficiency on larger projects with hundreds of thousands of holes to be drilled. These three- to five-gang models include the 210-3 SRA, 210-4 SRA, 210-5 SRA, 210-3 EQ MT, 210-4 EQ MT and 210-5 EQ MT.

» **MULTI-GANG**



	MINIMUM PATCH SIZE <i>in. (cm)</i>	DRILL DEPTH <i>in. (cm)</i>	DRILL BIT DIAMETER <i>in. (mm)</i>	DRILL DISTANCE FROM CORNER <i>in. (cm)</i>	AIR CONSUMPTION <i>cfm (m³/min)</i>	HOSE SIZE (ID) <i>in. (mm)</i>	DRILL MOTOR <i>(pneumatic)</i>	CHUCK SIZE* <i>in. (mm)</i>	WEIGHT <i>lbs. (kg)</i>
210-3 SRA	48 (121.9)	18 (45.7)	5/8 - 2 1/2 (15.9 - 63.5)	6 (15.2)	300 (8.40)	1 1/2 - 2 (38.1 - 50.8)	CP 32A	7/8 x 3 1/4 (22.2 x 82.6)	2000 (908.0)
210-4 SRA	48 (121.9)	18 (45.7)	5/8 - 2 1/2 (15.9 - 63.5)	6 (15.2)	400 (11.20)	2 (50.8)	CP 32A	7/8 x 3 1/4 (22.2 x 82.6)	2202 (998.8)
210-5 SRA	48 (121.9)	18 (45.7)	5/8 - 2 1/2 (15.9 - 63.5)	6 (15.2)	500 (14.00)	2 (50.8)	CP 32A	7/8 x 3 1/4 (22.2 x 82.6)	2400 (1089.6)
210-3 EQ MT	48 (121.9)	18 (45.7)	5/8 - 2 1/2 (15.9 - 63.5)	6 (15.2)	300 (8.40)	1 1/2 - 2 (38.1 - 50.8)	CP 32A	7/8 x 3 1/4 (22.2 x 82.6)	1500 (681.0)
210-4 EQ MT	48 (121.9)	18 (45.7)	5/8 - 2 1/2 (15.9 - 63.5)	6 (15.2)	400 (11.20)	2 (50.8)	CP 32A	7/8 x 3 1/4 (22.2 x 82.6)	1700 (771.8)
210-5 EQ MT	48 (121.9)	18 (45.7)	5/8 - 2 1/2 (15.9 - 63.5)	6 (15.2)	500 (14.00)	2 (50.8)	CP 32A	7/8 x 3 1/4 (22.2 x 82.6)	1900 (862.6)

*7/8 x 4 1/4" available upon request.

MULTI-GANG FEATURES



AUTOMATIC DRILL SHUTOFF

Increases drill life and lowers maintenance costs by eliminating dry firing.



TOW BAR PACKAGE (SRA)

Move the air compressor and drill at the same time with only one person required.



FOAM-FILLED TIRES (SRA)

Eliminate flat tires in multi-gang (3-5 drills) SRA models.



SIDE SHIFT (EQ MT)

Shift the unit left or right to drill a second set of holes without repositioning the carrier.



SWIVEL LOCK (EQ MT)

Secure the drill in place for safe movement from patch-to-patch. Activate this feature from the drill operator position.



"FLOATING" BUCKET CURL PIN (EQ MT)

Decreases positioning time by allowing drill frame to self-level.



VERTICAL DRILL ON WHEELS WITH VACUUM



YOUR NEED, YOUR DRILL

Every job has its unique requirements. If we don't have a standard model that's ideal for what you need to do, we'll custom design one.



2-GANG VERTICAL DRILL W/ REMOTE CONTROL BOX



2-GANG WALL MOUNT DRILL



3-GANG PARAPET WALL DRILL



3-GANG SELF-PROPELLED WALL DRILL



CART MOUNT 54" DD W/ ANGLE

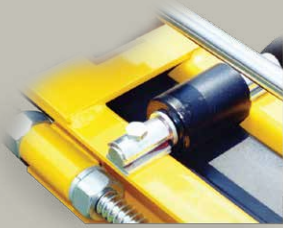


SLAB-RIDER WITH FEED BAR EXTENSION



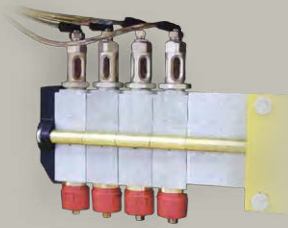
AIR MOTOR/GEAR BOX DRILL

» INNOVATIONS



PATENTED ROLLER-BEARING FEED

Eliminates friction on the carriage, lowers replacement costs, and helps prevent downtime.



MULTI-POINT OIL INJECTION

Ensures each drill motor is individually lubricated to increase life. Standard on all multi-gang units.



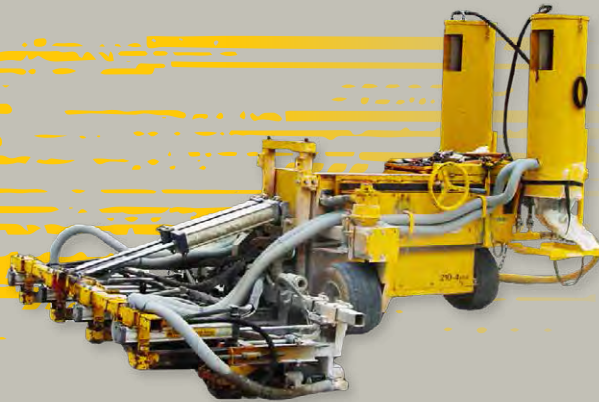
PATENTED TRI-STEERING

Simplifies maneuverability and repositioning on multi-gang units.



QUICK-RELEASE BIT GUIDE

You can replace drill bits, and the bit guide bushings, fast and easy.

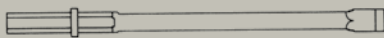


DUST COLLECTION SYSTEM

In today's construction environment, contractors have to be just as concerned about compliance of stringent air quality standards and dust control laws as they do with getting the job right and on time. That's why E-Z Drill offers an innovative dust collection system to use with any drill model. It is easy to install in the field, is powered by the same air compressor as the drill, and its self-cleaning filter minimizes maintenance.

» ACCESSORIES

Just like our machines, E-Z Drill service and parts delivery are fast and accurate. We offer a complete line of **one-piece whirl bits**, **two-piece H-thread bits**, **taper steel bits**, as well as **lubrication oil** specifically formulated for rock drills. E-Z Drill's popular **pin-puller** is a device used in combination with a lifting mechanism (i.e. loader bucket) for pulling paving form pins. The optional **air tank** for equipment-mounted models can be used with a smaller than recommended air compressor to power the drills. Call E-Z Drill for details.



ONE-PIECE WHIRL BIT



TWO-PIECE H-THREAD BIT



TWO-PIECE TAPER STEEL & BITS



AIR TANK FOR EQUIPMENT-MOUNTED MODELS



ROCK DRILL OIL



PIN-PULLER

ANY PROJECT. ANY DEADLINE.

No matter what kind of job you take on, do it with the most profitable drill in the business. Visit one of our dealers around the world or call us today. Just like our drills, we're always ready.

USA: 800-272-0121

International: +1-405-372-0121

sales@ezdrill.com

610 Cedar Street
Perry, OK 73077

EZDRILL.COM

E-Z DRILL

